

Celebrate any season, any reason!

Digitally Addressable LEDs:

Programmable schedules, color options, presets, effects, and scenes allow you to celebrate any holiday or occasion...



One Time Installation

One-time, hassle-free, and quick installation. Our permanent lighting surpasses temporary lighting in efficiency, convenience, and aesthetic appeal.



Easy Finance Options

Win more customers by enabling them to convert large purchases into smaller monthly payments.



Huge Profits

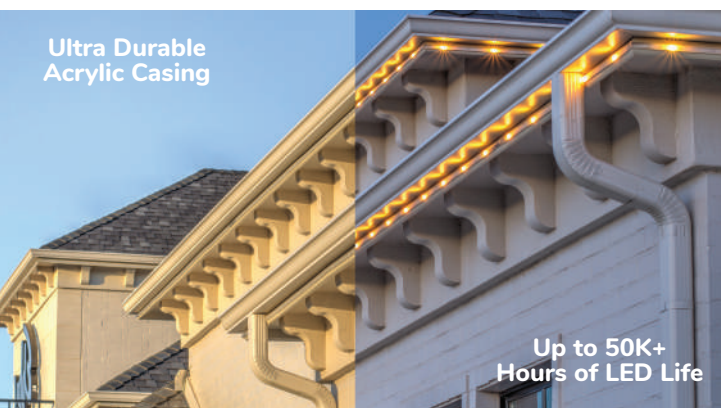
For a small financial commitment, you're able to build a multi-million dollar business with full support from the BlueHopper team.



Patented Technology

35+ Patents showcasing our unique lighting solution that outranks all competition in the segment.

Ultra Durable
Acrylic Casing



Up to 50K+
Hours of LED Life

Invisible during the day, amazing at night.

Our lighting strips totally disappear into the structure of buildings on which it is installed. Thanks to special acrylic mounted casings!

Let the advanced automation
of **BlueRoots App** do its role
throughout the year.

Opportunity For Installers

Broad Service Fit:

Ideal for electricians, landscapers, irrigation service providers, roofing companies, signage companies, and most home improvement and automation service providers.

High-Margin Opportunity: Premium permanent lighting with strong margins and year-round demand.

Training, Tools & Support:

Expert-led training, powerful installer tools, and ongoing technical support for every stage of your projects.

No Inventory Required: Order per project—no stocking, no carrying costs, no risk.

Marketing & Lead Generation:

Co-branded marketing assets, local map listings, and qualified leads from your local market.

Design Support: Free expert lighting designs to help installers plan, visualize, and execute outdoor lighting projects with ease.

Installer Community: Be part of a trusted network of certified installers for collaboration and growth.

Best-in-Class Warranty: Deliver long-term peace of mind with a robust, industry-leading warranty.



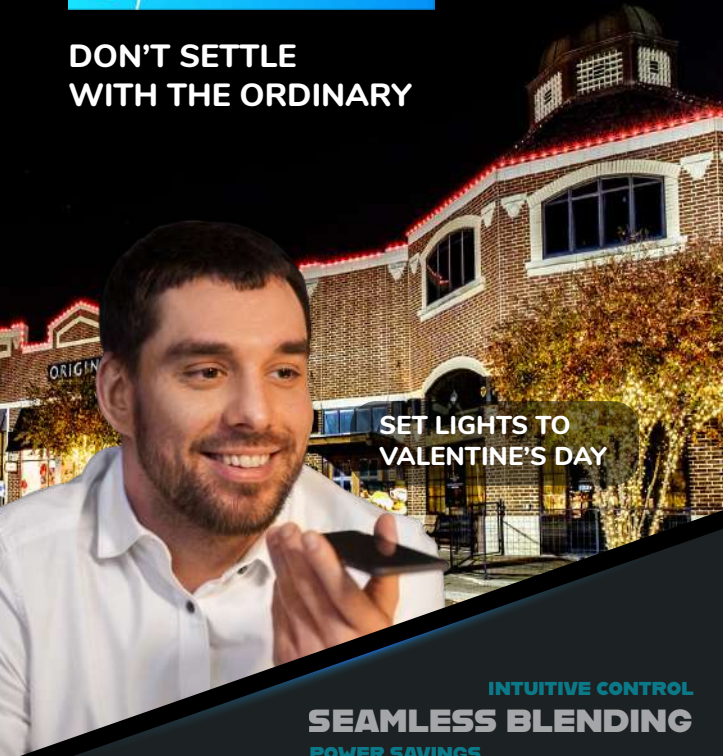
**BECOME A BLUEHOPPER
PERMANENT OUTDOOR
LIGHTING DEALER NOW!**



Our successful dealer partners are earning big profits. Our state-of-the-art lighting and automation technology is instrumental in building big businesses for dealers.



DON'T SETTLE WITH THE ORDINARY



INTUITIVE CONTROL
SEAMLESS BLENDING
POWER SAVINGS

Booming Industry
Easy Finance for Customers
Increased Earnings



Powered By
MESHTEK

01 EARNING POTENTIAL

Unlock lucrative earning potential across residential, commercial, and municipal projects, maximizing your financial gains.

02 BLUEHOPPER'S SUPPORT

Benefit from training with industry experts and guidance every step of the way, ensuring your success as a BlueHopper certified installer.

03 DEMAND

Competition, spending power, and the need to increase revenue have forecasted outdoor lighting to become a USD 28.42 billion industry by 2030.

04 COMPETITIVE ADVANTAGE

World's most reliable, long-range, bi-directional BLE mesh that brings exponential capabilities.

What Makes BlueHopper So Versatile?

BlueHopper offers permanent roofline lighting and a complete range of landscape lighting solutions for homes, businesses, and municipal buildings. The lighting system is app-controlled, allowing scheduling and offering numerous colors, scenes, and motion patterns, and offers the world's only reliable, long-range network that connects 5,000+ devices in 10 mn—sq. Ft.

BlueRoots, our bespoke app, is the brain behind BlueHopper's smart lighting. This user-friendly platform allows for effortless programming and scheduling, harnessing MeshTek's Bluetooth Mesh for local control. With optional integrations including Alexa, Google, and various security systems, BlueRoots offers flexibility and advanced control for every BlueHopper installation.



Schedules & Automation



Integrations



Account Management



Effects, Presets & Scenes



RGBW Sliders



Virtual Groups



Multi-User Control



Whites



World's First One-Click Scene

Scan & Read What Experts Have To Say About BlueHopper vs. Competitors!



Integrated with Google & Alexa

Various Security Systems Sports & Weather Feed

*via third-party integrations

lightfair 2023

international

Innovation Award Winner!

Category: Outdoor Lighting

A complete suite of permanent outdoor & landscape lighting solutions for your Residential, Commercial & Municipal properties...

05 RAPIDLY GROWING DEALER NETWORK

We're constantly increasing our installers' base across all cities and it's your chance now to stand out in your region.

06 ONE-STOP SHOP FOR THE BIGGEST PRODUCT RANGE

50+ products across roofline, landscape, decorative, and control solutions—everything needed for a complete outdoor lighting ecosystem.

07 PLETHORA OF ADVANCED FEATURES

100+ Scenes & Effects, Account Management, Integrations, Real-Time Scheduling, and many more features.

08 RELIABLE & SCALABLE

BlueHopper Lighting is powered by the world's only reliable, long-range BLE Mesh technology that connects 5K+ devices in 10 mn. sq. feet.

09 TALK TO YOUR LIGHTS!

Now control on/off, brightness, effects, and even set scenes, schedules or colors using natural voice commands.



WWW.BLUEHOPPER.COM