



In Ground Wash Light

The **In Ground Wash Light** is a durable In-Ground Wash Light with **18pcs 8W Osram RGBW chips**, delivering vibrant illumination with a **15° beam angle**. Its **IP67 rating** ensures protection against dust and water, while the **anti-glare design** enhances visual comfort. Equipped with a **2A fixed 4-channel driver**, it offers smooth performance and easy installation with a **30cm 6-pin female connector**. Backed by a **3-year warranty** for reliability.

Features and Advantages:



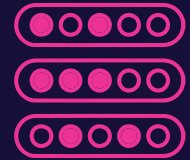
Plug 'n' Play Solution
Easy To Install
and Setup



Water-Proof
Lighting



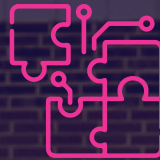
High Lumens Output
for every color with
HyperLux Technology



Digitally Addressable
RGB LEDs



One Controller
for upto 800 Nuggets
in upto 4 Directions



Works with MeshTek's
Advanced Bluetooth Mesh
Controller and Apps



Dual Data Line
Technology for Industry's
Highest Reliability



Fits in Patented
UV Protected Track
Invisible During The Day

General Specifications:

Power (Max)	18W
Beam Angle	15 Degree (2A fixed 4 channel driver)
IP Rating	IP67
Warranty	3 years
LED Chipset	18pcs 8w, Osram for RGBW
Special Features	Anti-glare design
Connector	30cm 6-pin female connector