



G4 BIPIN

Introducing the BlueHopper G4 Bipin Bulb – a revolutionary outdoor lighting solution that brings color and versatility to your outdoor spaces. This bulb features a sleek and compact structure with a G4 base, designed for easy installation and replacement in various outdoor lighting fixtures. What sets the BlueHopper G4 Bipin Bulb apart is its cutting-edge technology. Based on the patented HyperLux technology, this bulb is digitally addressable, providing advanced control and customization options for outdoor lighting.



**Patented Thermal
Management
Technology**



**Energy Efficient
and
Maintenance Free**

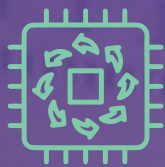


**16 Million Color
Combinations with
Brightness Control**

Features and Advantages:



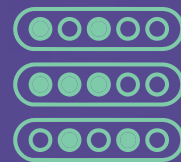
**Specific Whites
including Warm to Cool**



**Efficient Driver
Utilization**



**High Lumens Output
for every color with
HyperLux Technology**



**50,000 Hours
Osram RGBW LEDs**



**iOS, Android and
Web Apps Control
via MeshTek Gateway**



**Works in Mesh
with other MeshTek
Enabled Devices**



**Year-Round Scheduling
Capabilities with Numerous
Effects and Scenes**



**Strong and Durable
Metal Finish for Long
Lasting Application**

General Specifications:

Input Voltage	10V-16VDC AND 10V-13VAC
Power (Max)	2.5W max
Lumens (Max)	200
Type Of Light	Color and White Tunable
Control Method	Bluetooth Mesh via iOS, Android, and Web App
Scheduling	Weekly, Annually, and Calendar Wise (Repeater or Gateway Required)
One-Click Scene	Yes
Dawn & Dusk Scheduling	Yes
HyperLux Technology*	Yes
Group & Network Control	Yes
LED Chipset	Premium RGBW LEDs
Lifetime	50,000 Hours Life
IP Rating	IP64
Certifications	FCC (FCC-2ALGY-21032), IC
Dimensions (mm)	23.18x36.32 mm