



FLOOD LIGHTS

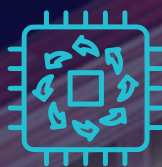
RGBW flood light for outdoor applications is a state-of-the-art lighting fixture with the patented HyperLux Technology. It enhances the commercial and residential properties night time decoration of various parts and areas of the infrastructure, while keeping the installation professional. Simple to install with plug and play lights, and controllers, scalability with daisy chain aspects, and variations in the fixtures to choose from, the flood lights are a perfect solution for giving infrastructures a premium feel.

With the HyperLux technology, the 180W and 80W floods pump color light output equivalent to 360W and 160W standard flood lights respectively, making the solution cost effective, and light weight for transportation and installation.

Features and Advantages:



**Energy Efficient and
Maintenance Free**



**Efficient Driver
Utilization**



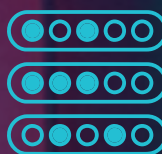
**High Lumens Output
for every color with
HyperLux Technology**



**External Thermal
Management**



**Daisy Chain
Connections**



**Upto 30,000
Hours of RGBW
LED Life**



**Strong and Durable
Metal Finish for Long
Lasting Application**

General Specifications:

Power (Max)	80W and 180W (Color Lumens Output Equivalent to 160W and 360W Fixtures Respectively)
Supply Voltage	24VDC Input (Using MeshTek provided 24V 200W MeanWell Power Supply Only)
Type of Controller	Bluetooth RGBW-PWM Controller (Separate Unit)
Control Methods	Direct Control by Smartphone with iOS, Android, and Web Apps via Gateway
Various Beam Angles	10 degrees to 120 degrees
Material	Die-Cast Aluminum
Max Lumens	6000 (80W), 12500 (180W)
Light Output	16 Million Colors and Dimmable
Whites Color Temperature Range	2000K to 7500K
LED Chipset	4-in-1 RGBW High Power, 16 Million Colors
Lifetime	35,000 Hours. Tested for Salt Spray for >1000 Hours
IP Rating	IP66
Color	Gray / Black

Powered By